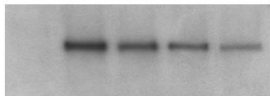
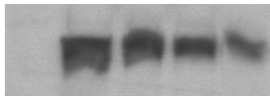


α -Myc IPs

V WT *SDM1* *SDM2* *SDM3*



← Sth1



← 6xMyc-Rsc4
derivatives

Supplemental Figure 1 Legend

Supplemental Figure 1. Rsc4 site-directed mutant assembly into RSC. Extracts were prepared from YBC627 transformed with either empty vector or plasmids bearing Rsc4 wild-type, SDM1, SDM2, or SDM3 fused to 6xMyc epitopes and grown in the presence of pRS316.*RSC4*. Immune complexes were formed with the anti-Myc antibody bound to beads, washed, eluted, immunoblotted, and probed with anti-Sth1 or anti-Myc antiserum. We note that reducing the abundance of Rsc4 protein 10-fold below wild-type levels (through repression using a *MET25* promoter) has no phenotypic consequence (data not shown).